

Land Management and Water Conservation Research Unit

Update November 2011

Publications - 17 professional articles, 20 abstracts, 2 proceedings,
3 book chapters, 2 trade journals

Trade-offs of harvesting crop residue

N and water use affected by crop density, rotation ,and tillage

Wild oat seed decay defense mechanism

Biological weed suppression

Nitrogen fixation potential in chickpea

Biochar and soil enzyme activity

Economic alternative strategies to control jointed goatgrass

Potential for winter canola in Northcentral Washington

PM2.5/PM10 emission potential from Washington soils

Complying with new PM10 standards in Washington

Presentations - Field Days (OR, WA, MT), conferences, workshops, K-12 classes

Update continued

Professional Societies - Editors, Board members, committee assignments, working groups

Tribal community development - grants, facility planning

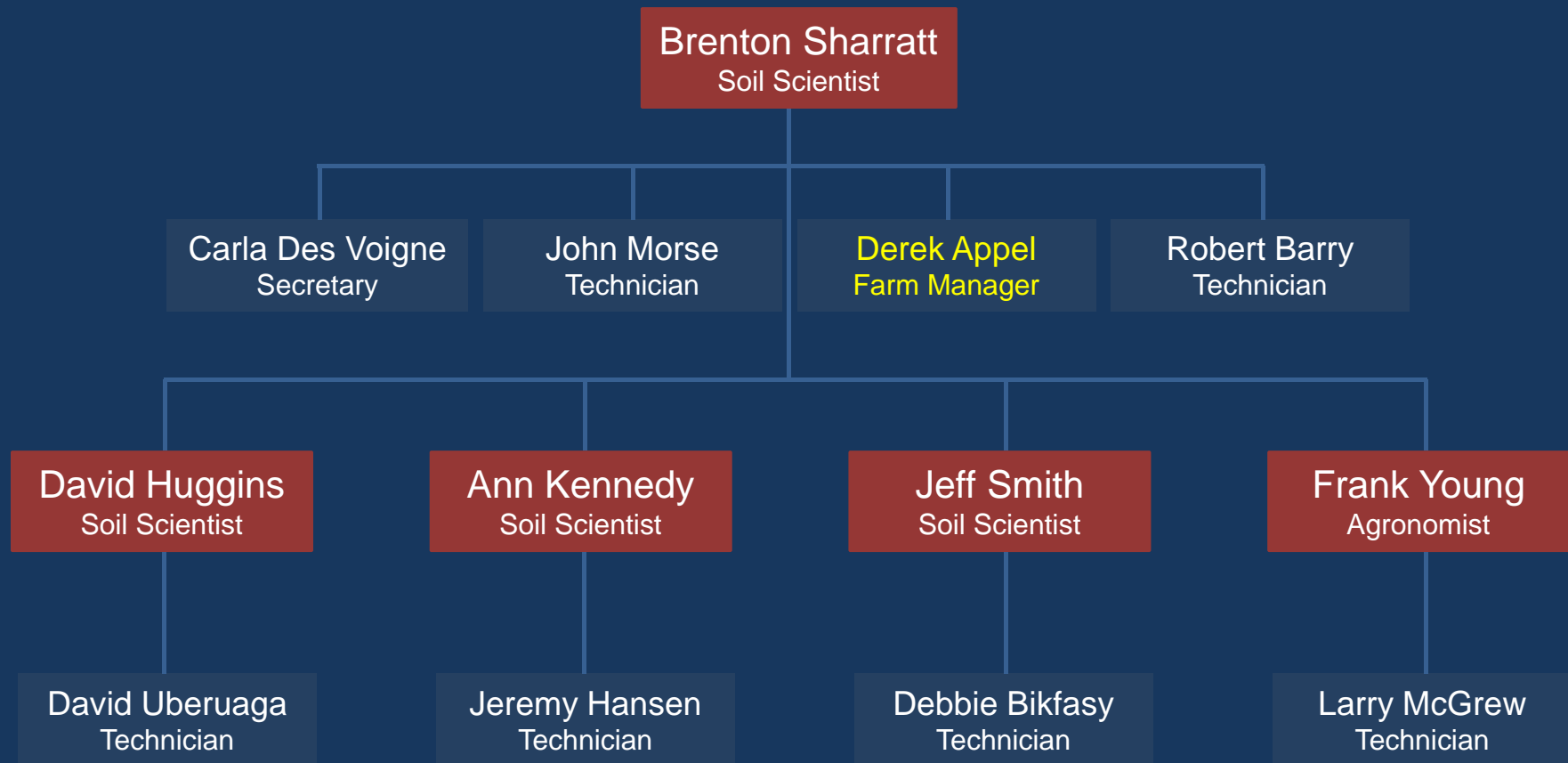
Grants - Climate change, bioenergy

Visitors - Intern (Pumping Up the Math and Science Program)

Equipment acquired - plot combine, trailer, cyclonic mill, CO2 chambers

Awards - WSU Team Interdisciplinary

Unit staff changes

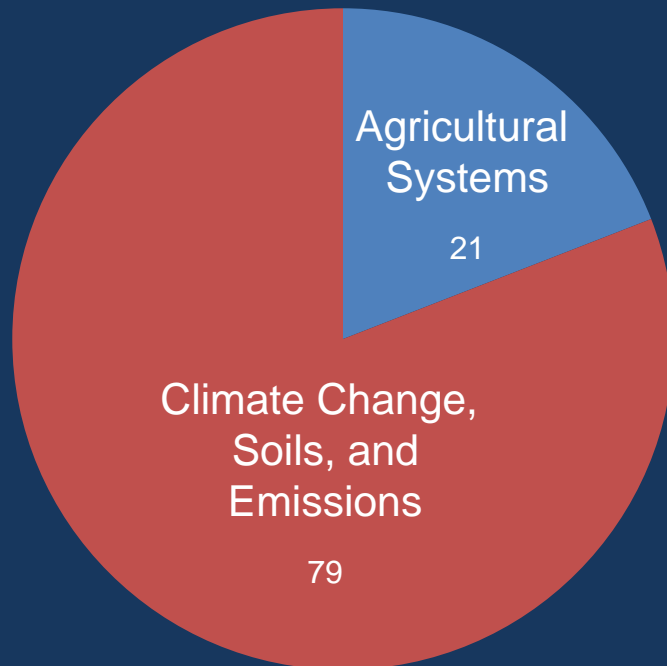


Unit Budget

FY2012 Congressional permanent appropriation = \$1.77 million
1.5% less than FY2011

Allocation

Percent by National Program



Distribution

Percent by category

